



evoHEATER

flow heater with evoREL management module

Flow heater: Enables supplementary heating of water in central heating (CH) and domestic hot water (DHW) systems with a heat pump, or the creation of a simple, independent heating system.

evoREL management module: When connected to the heater, it allows for independent activation of the built-in heating elements and features an independent thermal protection that disconnects the power supply.

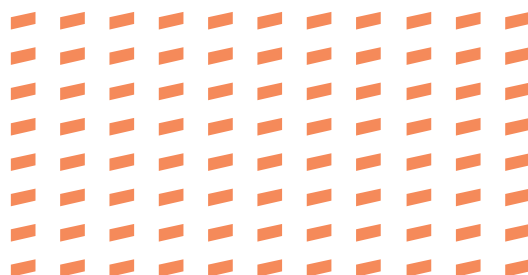
features

- ▀ ability to independently switch on one, two, or all three heating elements with a three-phase power supply
- ▀ maintaining a set water temperature in the circuit in cooperation with an external controller
- ▀ protection against exceeding the maximum permissible operating temperature

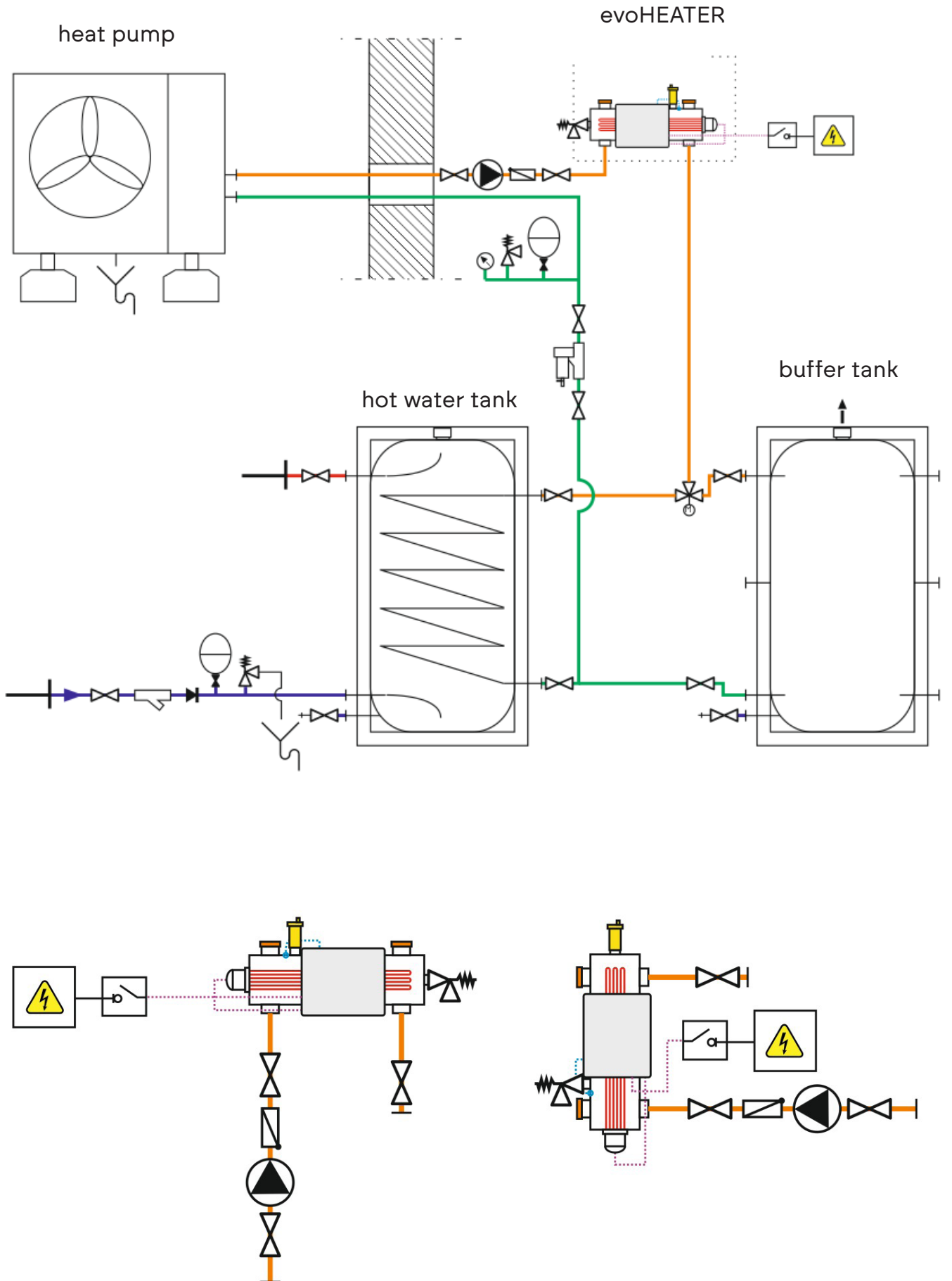
Plum Sp. z o.o.
ul. Wspólna 19, Ignatki, 16-001 Kleosin
BDO registration number: 000009381

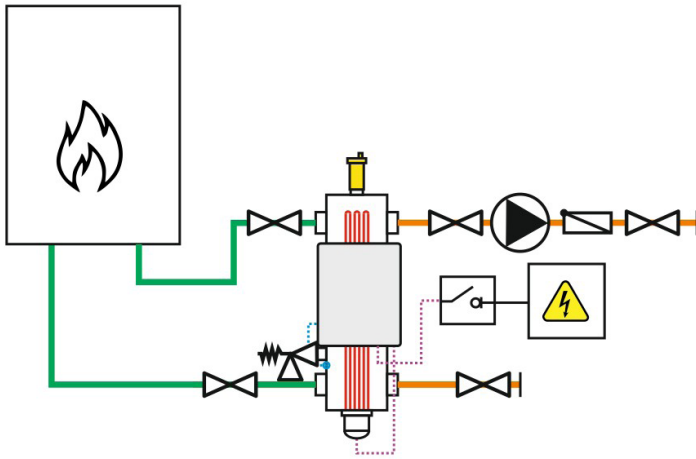
hvac.plum.pl
hvac@plum.pl

edition
1.0, 01.04.2026



Installation





technical data

connection ports / heater socket	GW 1" / GW 6/4"
maximum operating pressure	3 bar
supply voltage	230/400 VAC, 50 Hz
heating element power / max rated current	3 x 2000 W / 8,7 A, 3 x 3000 W / 13.04 A
module / heater protection rating	IP 20 / IP 54
maximum operating temperature	90°C
ambient / storage temperature	0...50°C / -10...+65°C
relative humidity	5...85%, non-condensing
thermal cutout	STB with capillary
protection class / standards	class I / PN-EN 60335-2-35, PN-EN 60335-1
micro-environment pollution degree	degree 2 according to PN-EN 60335-1
screw terminals	400 VAC: 2.5..4.0 mm ² - multi-strand wire with M4 ring terminal, tightening torque: 1.2 Nm
permitted operating fluids	treated water with corrosion inhibitor and glycol mixtures up to 35%%
heater / body material	stainless steel with brass head / carbon steel
dimensions	540 x 150 x 100 mm

